

## Your investment in accreditation strengthens the land trust movement

- Shows your land trust's commitment to sound finances, ethical conduct, responsible governance and lasting stewardship
- Connects your land trust to a select network of land trusts committed to excellence
- Builds partner and donor confidence in the land trust community

*"Our land trust is glad to be a part of the accredited land trust community. We are all stronger together, aligned in our approach, and able to relate to each other better knowing we speak the same language of best practices."*

**Joe Rising, Communications Coordinator, The Prairie Enthusiasts, Wisconsin**

*"When the movement was young, the systems were invented on the fly. There's been a natural progression over time: develop, promote, then require Standards and Practices. It's part of the maturation of the movement."*

**Foundation Executive**

# Your Investment in Accreditation Matters



## Your investment in accreditation keeps you on the leading edge

- Strengthens your land trust
- Engages your board and staff
- Ensures your land trust stays current with best practices
- Better positions your land trust to defend and steward its land

*"Accreditation is both a roadmap for how to do things right, and an affirmation that we're working at the leading edge of land conservation."*

**Steve Cook, General Counsel, Columbia Land Trust, Washington**

*"The process itself will make your organization stronger, better, and more focused. Be bold and never look back!"*

**Jill Bays, President, Transition Habitat Conservancy, California**



## Accredited Land Trusts

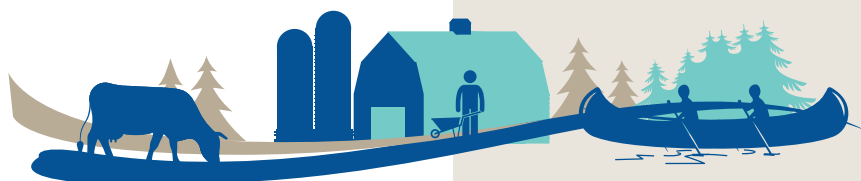
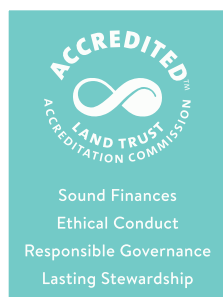
**Better positioned to protect, defend and steward land**

**8X** more money set aside for stewardship and defense\*

## The Impact of Land Trust Accreditation

In 2003 the Land Trust Census revealed the land trust community was unprepared to meet its promise of perpetuity. Only 16% of land trusts had conservation defense funds and many did not annually monitor their land and easements. In 2004 Congress became concerned, leading the Land Trust Alliance to create the Land Trust Accreditation Commission in 2006.

Today, the network of more than 400 accredited land trusts is made up of strong, respected leaders in their communities with the resources to forever steward the conservation lands entrusted to them.





## Your investment in accreditation pays you back

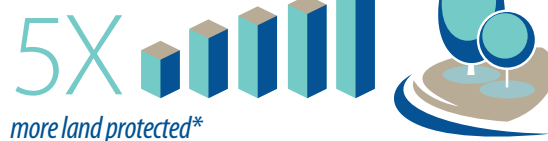
- Save more land
- Raise more money
- Attract more volunteers
- Qualify for valuable discounts and benefits



"Our acres conserved headed sky high after we were accredited. This speaks to the virtues of accreditation."

**Bob Stokes, President, Galveston Bay Foundation, Texas**

### Save more land



"'In perpetuity' is a weighty responsibility. Staying true to the accreditation standards gives peace of mind that we can deliver on that promise. Accreditation is not an end point; it is a continuous learning process for our staff and board of directors, and lets our conservation easement landowners, supporters, and the public know that we hold ourselves to the highest standards."

**Cathy Dombi, Executive Director, Southern Oregon Land Conservancy, Oregon**

**LAND TRUST ACCREDITATION  
COMMISSION**

An independent program of the Land Trust Alliance

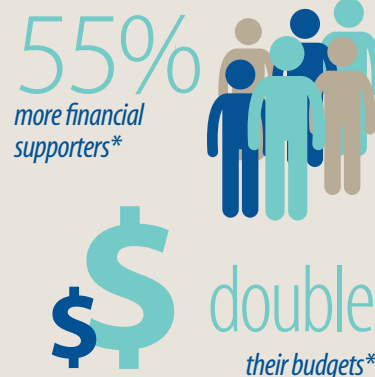
### Earn extended accreditation term

7 years  
upon third renewal



## Accredited Land Trusts

### Raise more money



### Attract more volunteers



\*As compared with eligible not-yet-accredited land trusts. Data is based on the Land Trust Alliance's 2005, 2010, and 2015 Land Trust Census.

Contact us for more information on partnering with the Land Trust Accreditation Commission, the impact of accreditation and the process.

36 Phila St, Suite 2  
Saratoga Springs, NY 12866  
[info@landtrustaccreditation.org](mailto:info@landtrustaccreditation.org)  
[www.landtrustaccreditation.org](http://www.landtrustaccreditation.org)  
518.587.3143

Front cover (l-r): Linda Besler, Mountain Area Land Trust; Southwest Michigan Land Conservancy; Back cover (l-r): Nathan Goshgarian, Mass Audubon; Douglas Land Conservancy; The Nature Conservancy Pine Butte Swamp Preserve